



(C) 2014 Amelie Sow-Dia, Courtesy of Photoshare

PMA2020/KINSHASA, DRC

SEPTEMBER-NOVEMBER 2017 (ROUND 6)

Performance Monitoring and Accountability (PMA2020) uses innovative mobile technology to support low-cost, rapid-turnaround surveys to monitor key indicators for family planning. The project is implemented by local universities and research organizations in 11 countries, deploying a cadre of female resident enumerators trained in mobile-assisted data collection. PMA2020/Kinshasa is led by the University of Kinshasa's School of Public Health, in collaboration with Tulane University School of Public Health and Tropical Medicine. The study is funded by the Bill & Melinda Gates Institute for Population and Reproductive Health at the Johns Hopkins Bloomberg School of Public Health with support from the Bill and Melinda Gates Foundation.

For more information, please visit <http://www.pma2020.org>

KEY FAMILY PLANNING INDICATORS

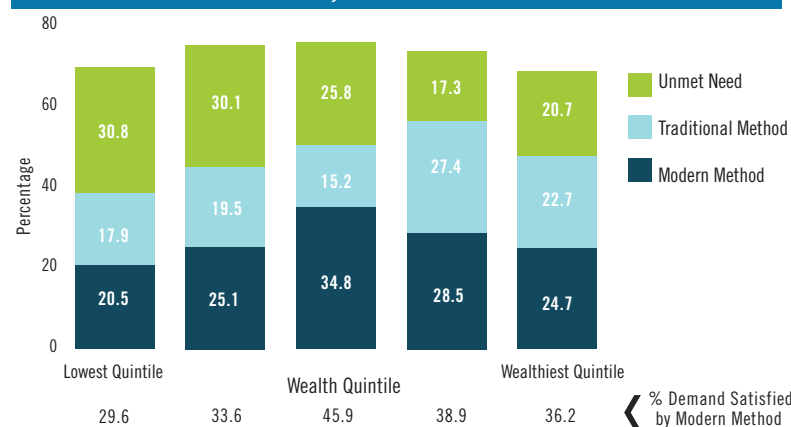
Select Family Planning Indicators Across Recent Surveys
All Women (n=2,568) and Women in Union (n=1,166), Age 15-49

	Round 4 Nov 2015-Jan 2016		Round 5 Aug-Sept 2016		Round 6 Sept-Nov 2017	
	All	Married	All	Married	All	Married
Contraceptive Prevalence Rate (CPR)						
All Methods CPR	42.3	50.2	42.3	49.9	40.5	47.3
Modern Methods Use (mCPR)	20.9	23.8	20.9	23.4	22.0	26.7
Long Acting/Permanent CPR	4.8	7.9	5.1	8.4	6.6	10.8
Total Unmet Need	16.0	25.6	14.6	22.6	15.8	24.8
For Limiting	3.4	6.7	3.0	5.9	3.2	5.7
For Spacing	12.6	18.9	11.5	16.7	12.5	19.1
Total Demand	58.3	75.8	56.8	72.5	56.2	72.1
Demand Satisfied by Modern Method (%)	35.9	31.4	36.7	32.3	39.1	37.0

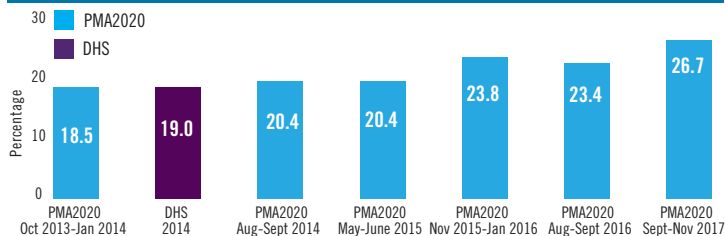
Fertility Indicators (All Women, Age 15-49)

	Round 4 Nov 2015-Jan 2016	Round 5 Aug-Sept 2016	Round 6 Sept-Nov 2017
Last Birth Unintended (%)	58.9	52.8	63.5
Wanted Later	45.2	47.4	51.8
Wanted No More	12.5	11.5	11.7

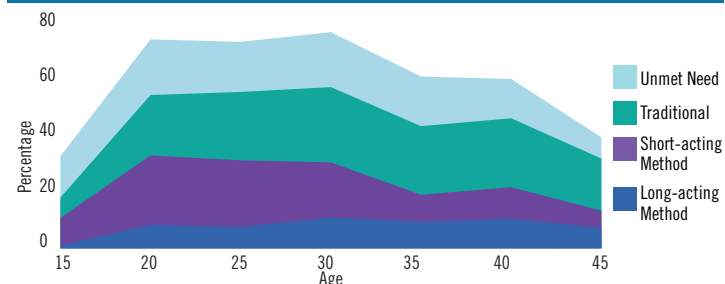
Current Use and Unmet Need Among Women in Union of Reproductive Age, by Wealth Quintile



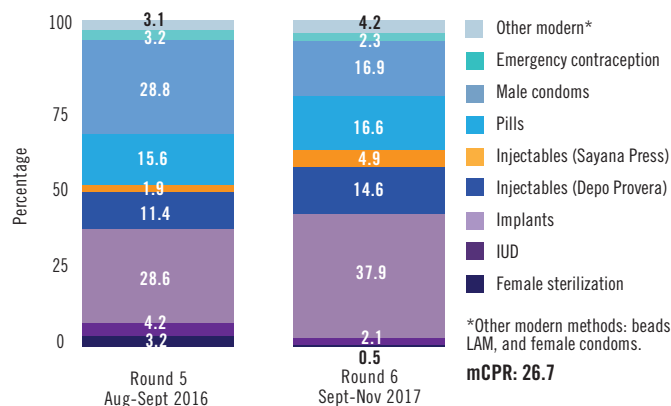
Modern Contraceptive Prevalence Rate (Women in Union, Age 15-49)



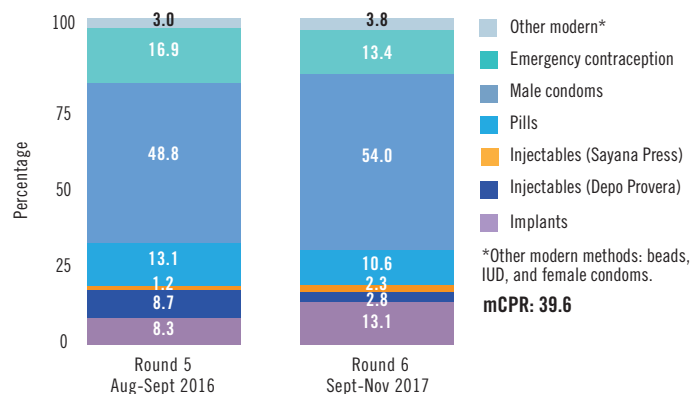
Unmet Need and Contraceptive Use, by Age (All Women)



Current Modern Method Mix Among Contraceptive Users in Union (n=283)



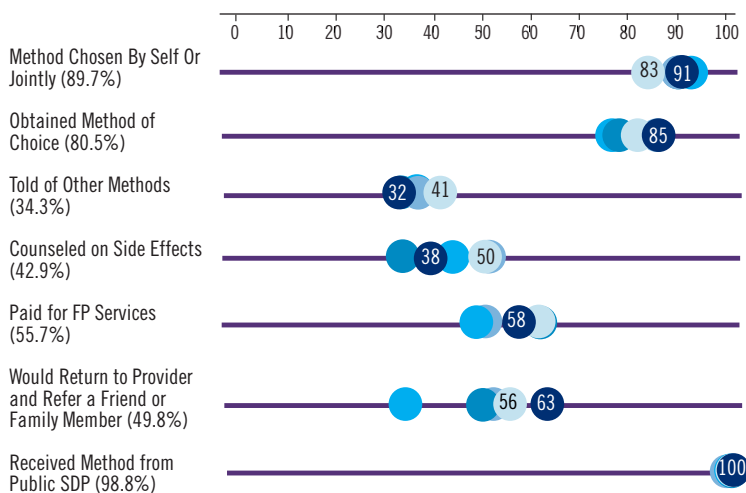
Current Modern Method Mix Among Unmarried Sexually Active Contraceptive Users (n=160)



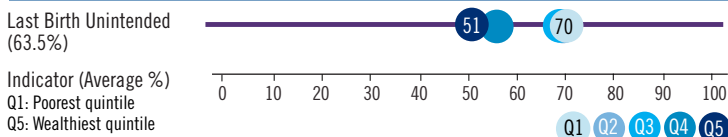
PMA2020/KINSHASA, DRC

INDICATORS FOR ACCESS, EQUITY, QUALITY AND CHOICE

For Current Female Users (%), Indicators by Wealth Quintile (n=533)

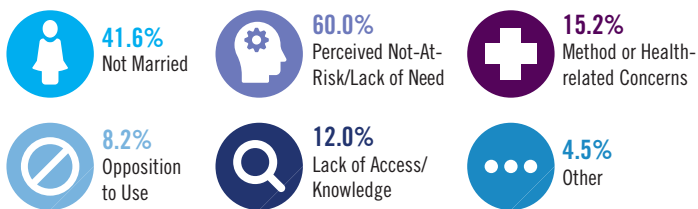


Births in the Past Five Years, or Current Pregnancies (n=991)



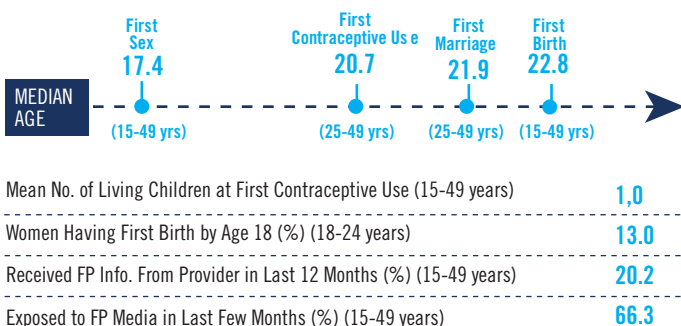
For Current Female Non-Users (n=885)

Reasons Mentioned for Non-Use Among All Women Wanting to Delay the Next Birth Two or More Years (%)

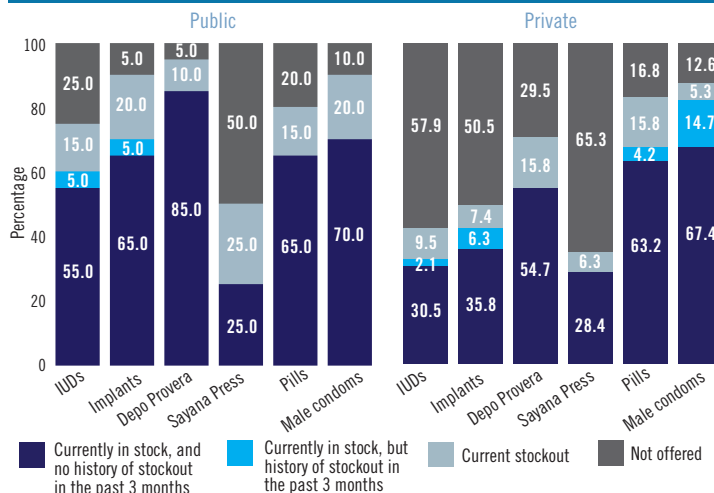


*Respondents were able to select more than one answer

Reproductive Health and Contraceptive Indicators



Percent of Facilities Offering Family Planning with Methods in Stock on Day of Interview (n=115, 20 Public, 95 Private)



Percent of All Public Facilities With At Least 3 or 5 Modern Contraceptive Methods, by Facility Type

Facility Type	3 or more methods	5 or more methods
Health Center (n=11)	72.7	63.6
Hospital (n=13)	76.9	53.8
Total	75.0	58.3

**Data from facility types with sample size less than 10 were calculated, but are not presented in this brief.

Service Delivery Points (n=177; 24 Public, 153 Private)

	Public	Private	Total
Among All Service Delivery Points:			
Offering Family Planning (%)	83.3	62.1	65.0
With Mobile Teams Visiting Facility In Last 6 Months (%)	8.3	11.1	10.7
Supporting CHWs from this Service Delivery Point (%)	29.2	15.7	17.5
Among Service Delivery Points Offering Family Planning Services:			
Average Number Of Days Per Week FP Is Offered	5.7	5.7	5.7
Offering Female Sterilization (%)	35.0	17.9	20.9
Offering FP Counseling/Services To Adolescents (%)	65.0	51.6	53.9
Charging General User Fees For FP Services (%)	10.0	11.6	11.3
Availability of Instruments or Supplies for Implant Insertion/Removal* (%)	66.7	91.5	84.6
Availability of Instruments or Supplies for IUDs** (%)	13.3	25.0	21.8

*Among SDPs that provide implants; includes: Clean Gloves, Antiseptic, Sterile Gauze Pad or Cotton Wool, Local Anesthetic, Sealed Implant Pack, Surgical Blade

**Among SDPs that provide IUDs; includes: Sponge-holding forceps, Speculums (large and medium), and Tenaculum

SAMPLE DESIGN

PMA2017/Kinshasa Round 6 used a two-stage cluster design to draw a representative urban sample of 58 enumeration areas (EA) in Kinshasa, using selection probabilities proportional to EA size. Sampling and listing of households occurred prior to the start of data collection. For each EA, 33 households were randomly selected, and all women of reproductive age (ages 15-49) within each selected household were contacted and consented to be interviewed. A total of 1,850 households (98.2% response rate), and 2,568 females (95.4% response rate), were interviewed, along with 177 SDPs (95.7% response rate). Data collection for Round 6 was conducted between September and November 2017.

