



# PMA2020/NIGER

MAY-SEPTEMBER 2017 (ROUND 2)

**Performance Monitoring and Accountability 2020 (PMA2020)** uses innovative mobile technology to support low-cost, rapid-turnaround surveys to monitor key indicators for family planning. The project is implemented by local universities and research organizations in 11 countries, deploying a cadre of female resident enumerators trained in mobile-assisted data collection. The first and third rounds of data collection in Niger were conducted exclusively in Niamey. The second and current (fourth) round of data collection were conducted at the national level. PMA2020/Niger is led by the Institut National de la Statistique (INS) in Niger. Overall direction and support is provided by the Bill & Melinda Gates Institute for Population and Reproductive Health at the Johns Hopkins Bloomberg School of Public Health through a grant from the Bill & Melinda Gates Foundation.

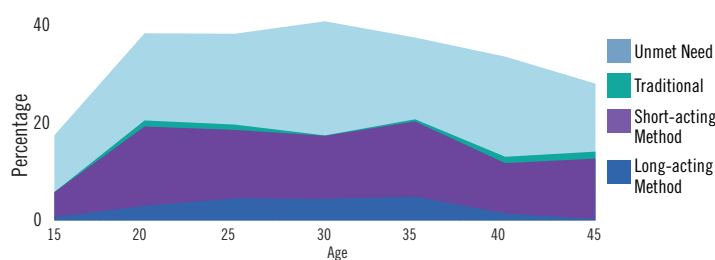
For more information, please visit <http://www.pma2020.org>

## KEY FAMILY PLANNING INDICATORS

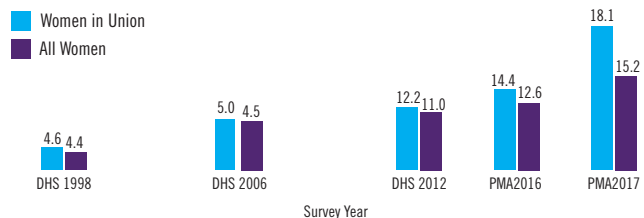
Select Family Planning Indicators Across Recent Surveys  
All Women (n=3,020) and Married Women (n=2,161), Age 15-49

	Niger DHS 2012		PMA2020 Nov-Dec 2016		PMA2020 May-Sept 2017	
	All	Married	All	Married	All	Married
<b>Contraceptive Prevalence Rate (CPR)</b>						
All Methods CPR	12.5	13.9	14.7	16.9	<b>15.9</b>	<b>18.9</b>
Modern Methods Use (mCPR)	11.0	12.2	12.6	14.4	<b>15.2</b>	<b>18.1</b>
Long Acting/Permanent CPR	0.5	0.5	2.0	2.4	<b>2.9</b>	<b>3.4</b>
<b>Total Unmet Need</b>						
	14.3	16.0	20.0	23.9	<b>17.6</b>	<b>21.0</b>
For Limiting	2.4	2.7	2.9	3.5	<b>2.1</b>	<b>2.4</b>
For Spacing	12.0	13.3	17.1	20.4	<b>15.5</b>	<b>18.6</b>
<b>Total Demand</b>						
	26.8	29.9	34.7	40.8	<b>33.5</b>	<b>39.9</b>
Demand Satisfied by Modern Method (%)	41.0	40.8	36.4	35.3	<b>45.4</b>	<b>45.3</b>

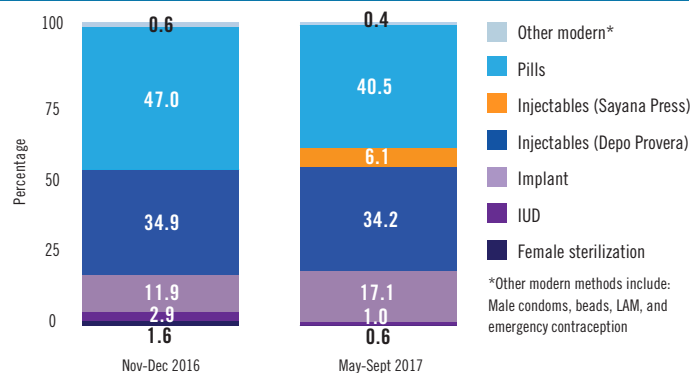
### Unmet Need and Contraceptive Use, by Age (All Women)



### Modern Contraceptive Prevalence Rate (Women Ages 15-49)



### Current Modern Method Mix Among Contraceptive Users in Union (n=549)



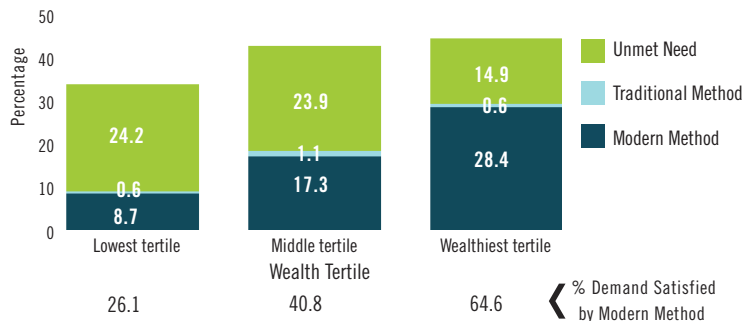
\*Other modern methods include: Male condoms, beads, LAM, and emergency contraception

### Fertility Indicators (All Women)

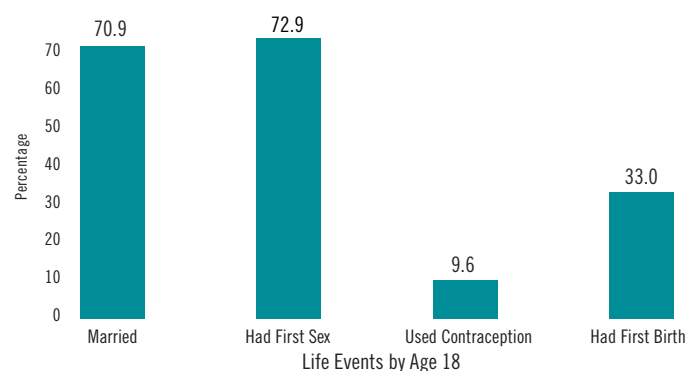
	Niger DHS 2012	PMA2020 Nov-Dec 2016	PMA2020 May-Sept 2017
<b>Recons Births Unintended (%)*</b>			
Wanted Later	8.2	20.7	<b>11.1</b>
Wanted No More	7.6	18.8	<b>9.8</b>
Wanted No More	0.6	1.9	<b>1.2</b>

\* Indicator measurement based on different questions posed in the DHS and PMA2020

### Current Use and Unmet Need Among Women in Union of Reproductive Age, by Wealth Tertile



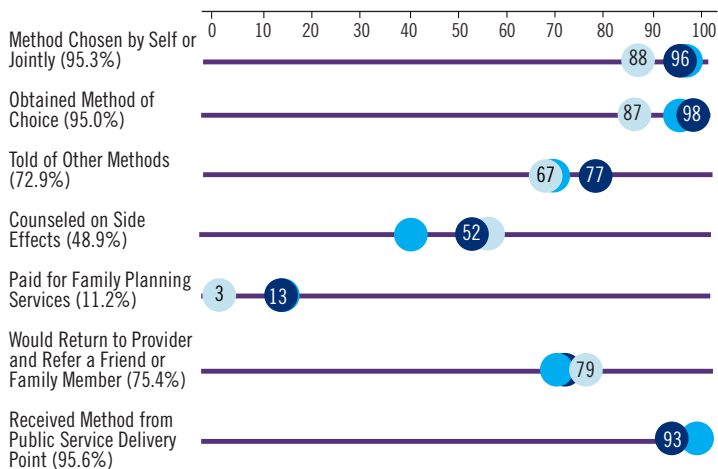
### Percent of All Women Age 18-24 (n=804)



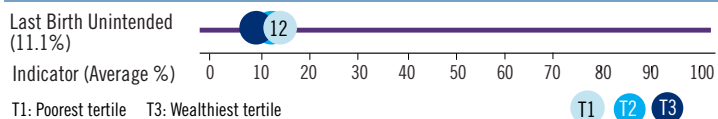
# PMA2020/NIGER

## INDICATORS FOR ACCESS, EQUITY, QUALITY AND CHOICE

For Current Modern Users (%), Indicators by Wealth Tertiles (n=564)

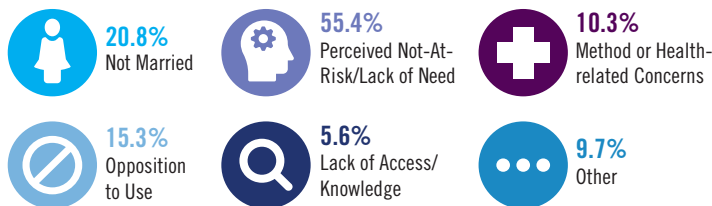


Births in the Past Five Years, or Current Pregnancies (n=1,751)



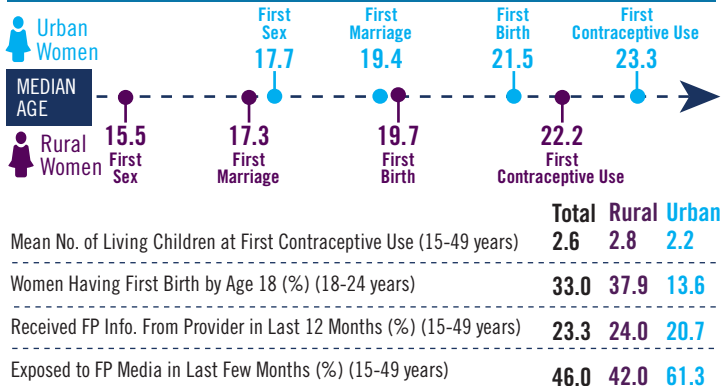
For Current Female Non-Users (n=1,016)

Reasons Mentioned For Non-Use Among All Women Wanting To Delay The Next Birth Two Or More Years (%)



\*Respondents were able to select more than one answer

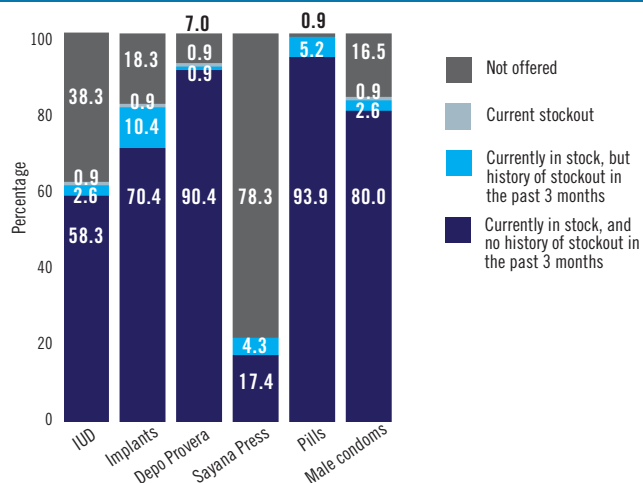
### Reproductive Health and Contraceptive Indicators



### SAMPLE DESIGN

PMA2017/Niger data provide national estimates, as well as for Niamey, urban areas outside of Niamey, and rural areas. A total of 84 enumerations areas (EAs) (51 outside of and 33 within Niamey) were selected, using probability proportional to size, from a sampling frame provide by the Fourth General Census of Population and Housing, conducted by Niger's National Statistics Institute in 2012. Structures, households, and service delivery points (SDPs) were enumerated in each selected EA. Thirty-five households were selected randomly from each EA. All eligible women, aged 15 to 49, in the sampled households were interviewed. SDP sample included three public SDPs that serve an EA and up to three private SDPs within the EA. Data collection occurred from May-September 2017. The final database included 2,784 household (98.2% response rate), 3,020 women (97.0% response rate) and 132 SDPs (96.4% response rate), of which 121 are public.

Percent of Public Facilities Offering Family Planning with Methods in Stock on Day of Interview (n=114)



Percent of All Public Facilities With at Least 3 or 5 Modern Contraceptive Methods, by Facility Type (n=121)

Facility Type	3 or more methods	5 or more methods
Hospital (n=20)	87.5	68.8
Integrated Health Center (n=75)	98.7	86.7
Health Hut (n=21)	90.5	4.8
Total	92.6	66.9

\*\*Data from facility types with sample size less than 5 were calculated, but are not presented in this brief.

Public Service Delivery Points (n=121)

Indicator	Value (%)
Among All Service Delivery Points:	
Offering Family Planning (%)	94.2
With Mobile Teams Visiting Facility In Last 6 Months (%)	28.1
Supporting Community Health Workers From This Service Delivery Point (%)	38.0
Among Service Delivery Points Offering Family Planning Services:	
Average Number Of Days Per Week Family Planning Is Offered	6.5
Offering Female Sterilization (%)	2.6
Offering Family Planning Counseling/Services To Adolescents (%)	88.6
Charging General User Fees For Family Planning Services (%)	5.3
Availability of Instruments or Supplies for Implant Insertion/Removal* (%)	73.4
Availability of Instruments or Supplies for IUDs** (%)	54.9

\*Among SDPs that provide implants; includes: Clean Gloves, Antiseptic, Sterile Gauze Pad or Cotton Wool, Local Anesthetic, Sealed Implant Pack, Surgical Blade

\*\*Among SDPs that provide IUDs; includes: Sponge-holding forceps, Speculums (large and medium), and Tenaculum